



# THE TIWI

NEWS for  
Traditional  
Owners



## Chairman's Message

Welcome back everyone to our new edition of "The Tiwi".

Firstly, we pay our Respects to all our Tiwi Families who have lost loved ones in the past few months, sadly recently also our member from Malawu - my nephew. We are really going to miss him.

TLC organised Governance Training for all our members, which was well received. Members have been empowered and inspired by this training.

The training was delivered by the Australian Institute of Company Directors (AICD) (see page 6).

Some great work is being done in Darwin by TLC member Teddy Portaminni and his wife Teresa helping our Tiwi people living in town away from home (see page 7).



Gibson Farmer Illortaminni  
TLC Chairman

Recently the Australian National Audit Office (ANAO) visited the TLC office in Darwin and met with all TLC staff. The ANAO team then went across to visit both islands accompanied by TLC staff from the Darwin office.



Continue page 2

## NEWS from your TIWI LAND Council

### Topics

Chairman's Message	1
Registration Day	5
TLC Grants Officer report	5
AICD Governance Training	6
Community News	7
Fire Management update	8
Tiwi IPA on track!	10
Diabetes management	12
Cultural Wellbeing Model	13
NT Port and Marine update	14
Tiwi Partners kicking goals	15
Tiwi College	16

## Good to know

The Tiwi Cultural Wellbeing Model

**NGAWURRAKURLURUMI**

Let us Grow Tiwi Cultural Wellbeing Model

See page 13



AICD - Governance Training in Wurrumiyanga, Bathurst Island, see page 6

# Chairman's Message



**ANAO also attended** Land Council meetings on the Island, where we had Allan McGill as guest to provide the TLC members an update of Tiwi Partners and their journey with the Tiwi.

See page 15



The members of the ANAO team L to R: Isabelle Favre, Eliza Glascott and Alicia Vaughan attending Tiwi Land Council meeting at Wurrumiyanga and meetings with all clan groups across the islands.



Allan McGill updating the Full Land Council of Tiwi Partners (Aust) Pty Ltd growth



Munupi and Yimpinari meeting with ANAO team



Jikalaru meeting with ANAO team



Mantiyupwi and TLC meeting with ANAO team members present



Continue page 3

# Chairman's Message



**We also had an important presentation** from Royal Darwin Hospital (RDH) regarding organ donors.

Education and information about how they can help our people was explained at the meeting.

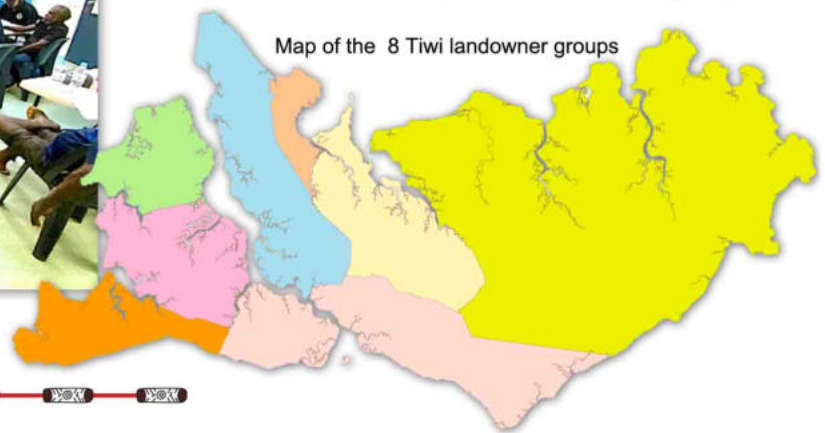


Informing the TLC about organ donation

**The members from the ANAO team** met with all 8 clan/family group members, TLC Grant Officer spoke about grant opportunities, and our New Economic Development and Projects Officer spoke about the funds that could be used for projects on the Islands.

TLC members were also informed of the Croc egg harvesting, and the very interesting detail about Croc farming.

At the same time John Mofflin from the Jack Thompson Foundation spoke to all 8 clan groups too.



**We welcome TLC's new team members** Sonja Hoffman and Yvonne Bradley in our Darwin office.

Sonja Hoffman is the new member of staff working at reception/administration.

Yvonne Bradley is the Economic Development Project Officer.

**Wishing you all fun** during your bush holidays, and look after each other and keep safe.

Mana

*Gibson Farmer Illortaminni  
Chairman Tiwi Land Council*

## Introducing: Sonja Hoffman



"I am Gangulu, but was born and raised in the central Queensland town of Rockhampton. I decided I needed a change and moved to Darwin nearly 22 years ago. I chose Darwin because my mum, Rosemary was living here and was working at the Renal Unit in Nightcliff.

After graduating high school, I have worked in all aspects of hospitality for a long time. After the birth of our son, I wanted to try something new and changed careers by doing a traineeship near on 14 years ago, I have been doing office work since, including Administration, Finance, Human Resources, and my specialty, Payroll. I have worked for a private (family owned entity) company, Local Government and Northern Territory Government and throughout some of that I was the book keeper for my husband's business. I live in Palmerston with my family."

*Sonja Hoffman*

Contact Sonja: 08 8997 0797

# Chairman's Message



## Introducing: Yvonne Bradley



“Awana All, 25 years ago, my Husband & I moved from QLD and lived and worked on Manangoora Station via Borroloola Community in the Gulf of Carpentaria starting our own fishing/crabbing business in which our company Bradley Seafood Pty Ltd received several prestige businesses awards. I also home schooled our 4 children in the remote part of the Gulf for 22 years, then for unseen circumstances beyond my control, I then moved to Darwin and worked as a Project Officer for Northern Territory Stolen Generation Aboriginal Organisation for 7 years. Since April this year, I've been employed as an Economic Development /Project Officer with TLC. I'm looking forward in bringing my experiences to help the Tiwi people set-up their own businesses and enterprises for long term economic employment for families and future generations to come. I also like to thank the Tiwi people for the privilege of visiting your beautiful country. Mana”

*Yvonne Bradley*

Contact Yvonne: 08 8997 0705

## Tiwi Land Council business



First full Land Council meeting held in Wurrumiyanga, Bathurst Island, April 2022



Continue page 5

# Tiwi Land Council business



Tiwi Registration Day at Wurrumiyanga, Bathurst Island in March 2022 - Good turn out!



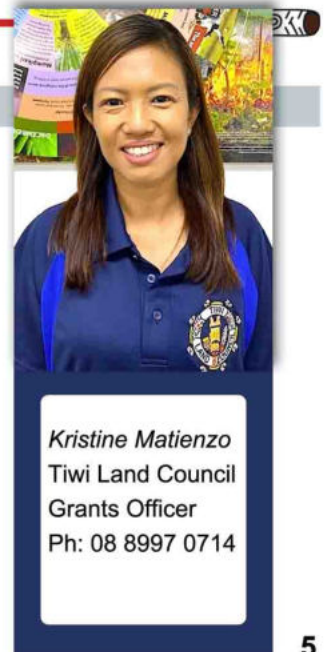
Red Cross team with Kevin Doolan supported TLC with their BBQ trailer



## Report from TLC Grants Officer

### Tiwi Land Council Assisted Successful Grant Applications:

- ▶ Tiwi Enterprises - Visitor Experience Enhancement Program (VEEP) – NTG – Round 5 - to Upgrade the Tiwi Islands Welcome Centre in Bathurst Island for brochure stand, souvenir stand, shade sail and steel, bench seats - \$14,866.74
- ▶ Mantiyupwi Pty Ltd – Foundation for Rural and Regional Renewal – Strengthening Communities Program – Community Tree Planting and Clean-up Day - \$5,500
- ▶ Tiwi College – NIAA Indigenous Boarding Providers Grant – Tiwi College Fitness and Wellness Centre for Boarders - \$83,900
- ▶ Mantiyupwi Pty Ltd/Murrupurtiyanuwu Catholic Primary School (MCPS) – NIAA Aboriginal Benefit Account – Wurrumiyanga Community Bike Pump Track - \$455,650



Kristine Matienzo  
Tiwi Land Council  
Grants Officer  
Ph: 08 8997 0714

# AICD Governance Training



**Land Council members** finally secured support for Governance Training, with sessions recently held over 3 full days at Wurrumiyanga. The Australian Institute of Company Directors (AICD) delivered this training. Members were both inspired and empowered in their Governance responsibilities.



At the end of the course the TLC members received happily a certificate as a statement of their attendance



# Community News



**Teddy Portaminni and his wife Teresa** attended a course on theology - translating the bible into language. As a coincidence they met the Bishop from Ukraine, who was interested to meet the Tiwi in faith. So too were Teddy and his wife. He told the Bishop, that the colours of the Ukrainian flag matched the colours of a football team on the Islands.



Historic - meeting the Bishop of Ukraine at St. Mary's Cathedral in Darwin

## Past and present Tiwi Leaders

The Tiwi Land Council would like to acknowledge all our past and present Tiwi Leaders.

# Fire Management update



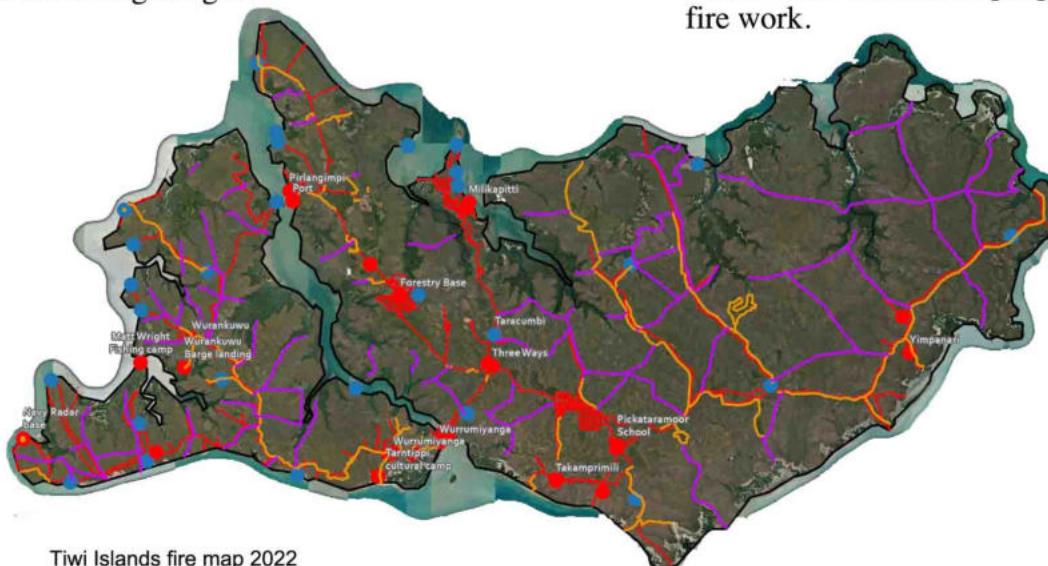
**The dry season has begun.** The last few months Tiwi rangers have been busy preparing for the early dry season fire program. Late April, we began the first of many aerial burning trips. This year there are a few changes to make sure the transition from ILSC funding to Tiwi Resources is smooth. This means that we will generate our own carbon credits, sell them, and use the money to fund our fire program. This year the planning of the burn lines (where we will burn) has changed from previous years. In the past there was a large amount of focus on roadside burning and only a small amount of work done in the helicopter to put in breaks.

**This year, we are planning** on a much larger program, using the helicopter to break up the country into smaller areas. This way when late season fires start, they are less likely to burn large areas and will have a smaller impact on the land overall. You might have seen the burn plans that the rangers have been putting up in the shops in Wurrumiyanga, Milikapiti and Pirlangimpi and is also included in this newsletter.



## The purpose of burning in this way is to make sure that:

1. We burn earlier to try and have less of an impact “good fire”, protecting the habitat for birds, reptiles, mammals, and plants. Protecting bush foods and making sure it continues into the future.
2. We contain any late fire “bad fire” and stop it becoming a big fire.
3. We control the fires we light, the earlier in the burning season we light, the more likely it is that the fires will go out over night with the dew and rain.
4. To try and burn less overall. The smallest amount of early fire that stops late season wildfires. This way we can get a financial return from our carbon program to fund the fire work.



**Legend**

**Burn Type**

- Helicopter Burning
- Roadside Burning

**Infrastructure**

- Containers
- Infrastructure
- Roads



# Fire Management update



To help with this they have also engaged a fire project manager to help them deliver this project and help them manage their carbon program now that ILSC will no longer be doing this for them. You might see him around. His name is **Toby Barton**.

If you're heading out bush and want to do some burning, think about where you're doing it. Late April we started aerial burning and on the same day someone lit a fire right on the edge of the plantation! We need everyone to think about where you are burning, you don't want to burn down the forestry areas accidentally!

Or pop in and have a chat to the rangers. They're more than happy to help TO's do their burning.



We have also ordered signs that will go on all roads in and out of communities, and at barge landings. It's important that everyone follows these. When you're going out to look after your country make sure to check the signs to make sure it's not too late to do burning.



We can't stop fires that start by lightning, but we can stop most late season "bad fires" if people stop lighting up late.

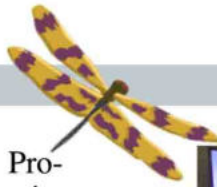
Don't forget to do backburns around your new containers, please make sure you're clearing around these to protect them from fire. If you have a container on your country, now is the time to go and put in your firebreak to make sure that they don't get burnt!

This year we need to ask people to please not light up along the Jessie road at all. Charles Darwin Uni is doing a study that looks at the damage that good and bad fire do to animals on the island. This information will help us decide how we try and do burning on the island in the future.

At the end of the early burning program we will be traveling around all communities and schools to talk with as many people as we can about fire. If you want to talk to us before then, come and see us at any of our bases, we're always happy to chat.



# Tiwi IPA on track!



**Planning** for the Tiwi Islands Indigenous Protected Area (IPA) is progressing really well despite the disruptions faced over the past couple of years due to Covid-19.

**The IPA Planning Committee** (representing all eight landowner groups) met in Wurrumiyanga in the first week of May. Given it had been a while since the committee met, the first part of the meeting was a recap - reminding everyone of the great work they've already done in identifying **Values** (aspects of country and culture that Tiwi cherish), grouping those values into **Targets**, and then identifying the **Threats** (such as feral animals, weeds, climate change, etc) that may jeopardise the health of the Tiwi **Targets**.



IPA Planning Committee meeting in May in Wurrumiyanga, Bathurst Island

# Tiwi IPA on track!



The next planning step was to rate the **Threats**, ordering them from the most to least serious.

The **Top Threats** were Loss of Culture, Feral Pests, Climate Change, and Lack of Access to Country. The second day focused on strategies or solutions – what can be done to tackle the Threats to Tiwi culture and country over time? There was plenty of good discussion and members had lots of great ideas which have been recorded and will go into the IPA's Plan of Management.

There's still much to figure out and the Planning Committee will meet again in Wurrumiyanga on the 19th and 20th of July.



IPA Planning Committee meeting in May 2022

## Tiwi IPA Logo – Pupuni Murrakupuni!

At the IPA Planning Committee meeting in May members agreed on Pupuni Murrakupuni (beautiful country) to be used as the tagline for the Tiwi IPA logo.

The logo, which was developed last year by the Committee, serves two purposes - it tells people the name of the IPA and creates a visual symbol that represents the islands and Tiwi people. It has the following elements, each of which has significant meaning for Tiwi:

- Minta – Cycad (*Cycas armstrongii*)
- Pipirriwini - Dragonfly
- Jipwajirringa - Agile Wallaby
- Japalingini – Headband worn during Pukumani ceremonial dances
- Japurraringa – Forked fighting stick



*'It tells the story about the wallaby protecting our land, and the japurraringa tells the story of our people and connects us to our ancestors.'* Ron Poantimilui (IPA Committee Member)

# DIABETES across the LIFECOURSE

## Northern Australian Partnership



### The DIABETES across the LIFECOURSE:

Northern Australian Partnership has been working with the people of the Tiwi Islands since 2011. Our research team has grown since 2011 but we are still working to improve the health of women who have diabetes in pregnancy.

This work is still important because diabetes runs in families (intergenerational diabetes). Children of mothers with diabetes in pregnancy are more likely to have big babies. These babies are also more likely to develop type 2 diabetes at a younger age.

With the right support and information, there is a lot that women and communities can do to prevent and manage diabetes. Our research is now focused on working with communities to make real changes to support women and communities to have healthier lifestyles.

In October 2021, Ms Sian Graham, who is part of the Diabetes in Pregnancy team visited Wurrimiyanga. Sian talked to women who had diabetes in pregnancy, women's family members and health professionals. Thank you to all of those who gave their time and shared their stories. The research team hopes to return to Tiwi soon to provide feedback about what has happened.

For more information about this project, please contact Sian Graham on 8946 8634 or see: <https://diabeteslifecourse.org.au/>



# Tiwi Cultural Wellbeing Model



The Red Cross and Kevin Doolan introduce the 'Tiwi Cultural Wellbeing Model'.  
Please contact for the full version:  
Kevin Doolan: [kdoolan@redcross.org.au](mailto:kdoolan@redcross.org.au)

## NGAWURRAKURLURUMI

Let us Grow Tiwi Cultural Wellbeing Model

The Tiwi Cultural Wellbeing Model will eventually be accompanied by Tiwi song, dance and Tiwi stories.

### Ngawurrakurlurumi

Let us grow Tiwi Cultural Wellbeing Model

- Ngawa-ngimpurumungurumi  
(We understand)
- Puranji-ngawurramuwajirri (Loving each other, making connection with land, family)
- Yingwampa-Ngawuntayapingintayi (Thinking about others first and putting others first)
- Ngawurrayamangajirri (Respecting other Skin Group and Family Groups)
- Ngawurrayamangamiya (Respecting and looking after ourselves)

The Model is there for all Tiwi and others to use and to promote Ngawurrayamangamiya (self-respect) and Ngawurrayamangajirri (respect for others).

*Kevin Doolan*  
Regional Manager Tiwi Islands  
Wurrumiyanga Communtiy  
Tiwi Islands N.T. 0822  
c/-P.O. Wurrumiyanga  
Mob: 0447 176 323

### Nginingawula Ngapangiraga

Tiwi Talk

1. Ngajirti jirti ngirramini ngawujirrangiraga  
(No bad words come from us)
2. Ngajirti Ngawa jamamankajirri  
(No pointing at or blaming each other)
3. Pupuni ngirramini ngawurtiyarra-pirrajirri  
(Let's talk in a good way to others)

### Nginingawula Ngapangiraga

Tiwi Talk

4. Partingarri paparluiwi ngirramini putuwurupura. Api awarra ngawurrayanu-ngumwari  
(Long time ago, our ancestors left behind our stories that we should hold on to)
5. Kukunari ngawurrami nginigawula murrakupuni  
(Be proud of our land)

## Ngawurrayamangamiya

### Respecting and looking after ourselves

"The model is based on self-respect and respect for others and has been developed by some of the Tiwi Elders from all of the Tiwi communities, who have given me their input about those two things: self-respect and respect for others." *Kevin Doolan*





## What's Happening at Port Melville?

On the 10th June the bulk carrier MV Anemona berthed at Port Melville and loaded shipment number 20 comprising some 38,000mt of woodchips for export before departing on the 16th June. Congratulations to all involved for ensuring the success of this shipment.



## Port Personnel

Port Melville welcomes some new faces! Cameron Metcalfe has commenced as Port Manager, Denny Shewell as the Maintenance Manager and Grant Austin as one of our maintenance team.



Cameron Metcalfe  
Port Manger



Denny Shewell  
Maintenance Manager



Grant Austin  
maintenance team member

*Jon Betjeman, Business Manager NT Port & Marine*  
Email: [jon.betjeman@agc-ausgroup.com](mailto:jon.betjeman@agc-ausgroup.com) • Mob: 0415 949 019

# Tiwi Partners kicking goals



In 2016 the Tiwi Land Council (TLC) and the Tiwi Islands Regional Council (TIRC) worked together and created a business known as the Tiwi Partners Joint Venture.

The business was jointly owned (50% each) by Pirntubula Pty Ltd and Sitzler Pty Ltd. In July 2019 the Joint Venture was reformed into a Company called Tiwi Partners (Aust ) Pty Ltd. That Company is also jointly owned by Sitzlers and another company called Tiwi Equity Holders Pty Ltd.

The Company is currently creating a Community benefits trust fund and, following guidance from the TLC, membership of that Committee (to distribute funds provided through that Trust) will be made up of 1 representative from each of the 8 Tiwi Clan groups. It is hoped that funds will become available later this year. The funds must be used for charitable purposes such as health, education, and funeral costs.



## Company story - a bit like a game of football

The Tiwi Partners story is a really good one and the Tiwi Community should be proud of the initiative to create a joint venture. It's a bit like a football team really.

There was:

- A pre-season to get ready.
- A first quarter to get to know the opposition.
- A second quarter to develop a game plan.
- A second half to build on earlier performances and start kicking game winning scores.

The first half has taken 6 years and the second, starting in July, will also play out over the next 6 years or so.

That might sound a bit gammon, but Tiwi Partners has performed very well completing some really big projects and now has an excellent reputation, with The Department of Defence, as a highly regarded contractor.

The June 2022 edition of the Defence Fuel Supply Chain bulletin, quotes The Defence Force project manager, Kevin Aldridge as saying:

*"Tiwi Partners has been a shining star  
They're always willing to work with  
The squadron to get the best outcome"*



The Directors of Tiwi Partners Board are:

### Tiwi half of the Board:

Lesley Tungutalum	Pirntubula and Tiwi Equity Holders
Austin Wonaeamirri	Pirntubula and Tiwi Equity Holders
Mary Dunn	TIRC and Tiwi Equity Holders
Lynette DeSantis	TIRC and Tiwi Equity Holders

### Sitzler half of the Board:

Michael Sitzler	Sitzler Pty Ltd
Steve Margetic	Sitzler Pty Ltd
Allan McGill	Sitzler Pty Ltd
Vacant	Sitzler Pty Ltd

**Independent Chair** Allan McGill – Acting Chair

Note: Marion Scrymgour was the Chair but resigned when elected to Parliament



The following are some of the jobs Tiwi Partners has completed so far:

- Paru - Melville Island road
- Jindalee over the horizon radar upgrade
- Delamere Bombing Range upgrade
- RAAF Darwin - Fuel supply

Tenders have been submitted for further work including work on the Tiwi Islands.

As half time finishes, the Company will establish a new office in Darwin and become less reliant upon the support provided by Sitzler Pty Ltd and will continue to bid for work in the defence industry as well as projects on the Tiwi Islands.

As the Company wins more work, the opportunity for more employment will be created.

Preparing a tender can be expensive with some costing well over \$200,000. If the Company doesn't win the tender, those costs are lost. If the tender is successful, the costs will be recovered through the contract.

The Tiwi Partners Board is committed to creating more opportunities for Tiwi people through employment and the funds that will be made available through the Trust Fund.

As the Acting Chair I provided the TLC with an update in June and would welcome the chance to brief any other Tiwi organisation that would like a briefing.

Since July 2016, Tiwi Partners and/or Sitzler Pty Ltd have provided over \$360,000 in support for the Tiwi Community through funds to offset funeral costs, sponsorship for football, Tiwi College and other projects.

Tiwi Partners is a good story and one that Tiwi people should be proud of.

*Allan McGill, Acting Chair*

# Tiwi College

## Welcoming the new Deputy Principal Matt Richards



**I would like to respectfully** acknowledge the land Tiwi College resides on as Mantiyupwi Country and I give thanks to all Tiwi people – past, present and future – for the opportunity to live and work on the Tiwi Islands alongside them. This term has certainly flown by! I have been very lucky to be a part of many amazing experiences here at Tiwi College. On Friday the 11th of March, Trouble, Savage, KK and I spent some time at Charles Darwin University for a First Nation welcome BBQ. It was a wonderful opportunity for Tiwi College staff to look at the higher education options for our Tiwi College Students. We would like to thank the Traditional Owners of Darwin, the Larrakia people for allowing us to visit and take part in this special day. We would also like to thank Professor Reuben Bolt for his warm welcome, and we are very much looking forward to working with him in the future. We can't wait to have you on the Islands for a visit Reuben!

Mana

*Matt Richards, Deputy Principal Tiwi College*



**Awana  
mamanta**

